

YOUR PARTNER FOR A SUSTAINABLE INDUSTRY

SEURECA

THE CONSULTING ENGINEERING HUB OF VEOLIA

Seureca is the consulting engineering division of Veolia, world leader in optimized resource management with over 170 years of experience.

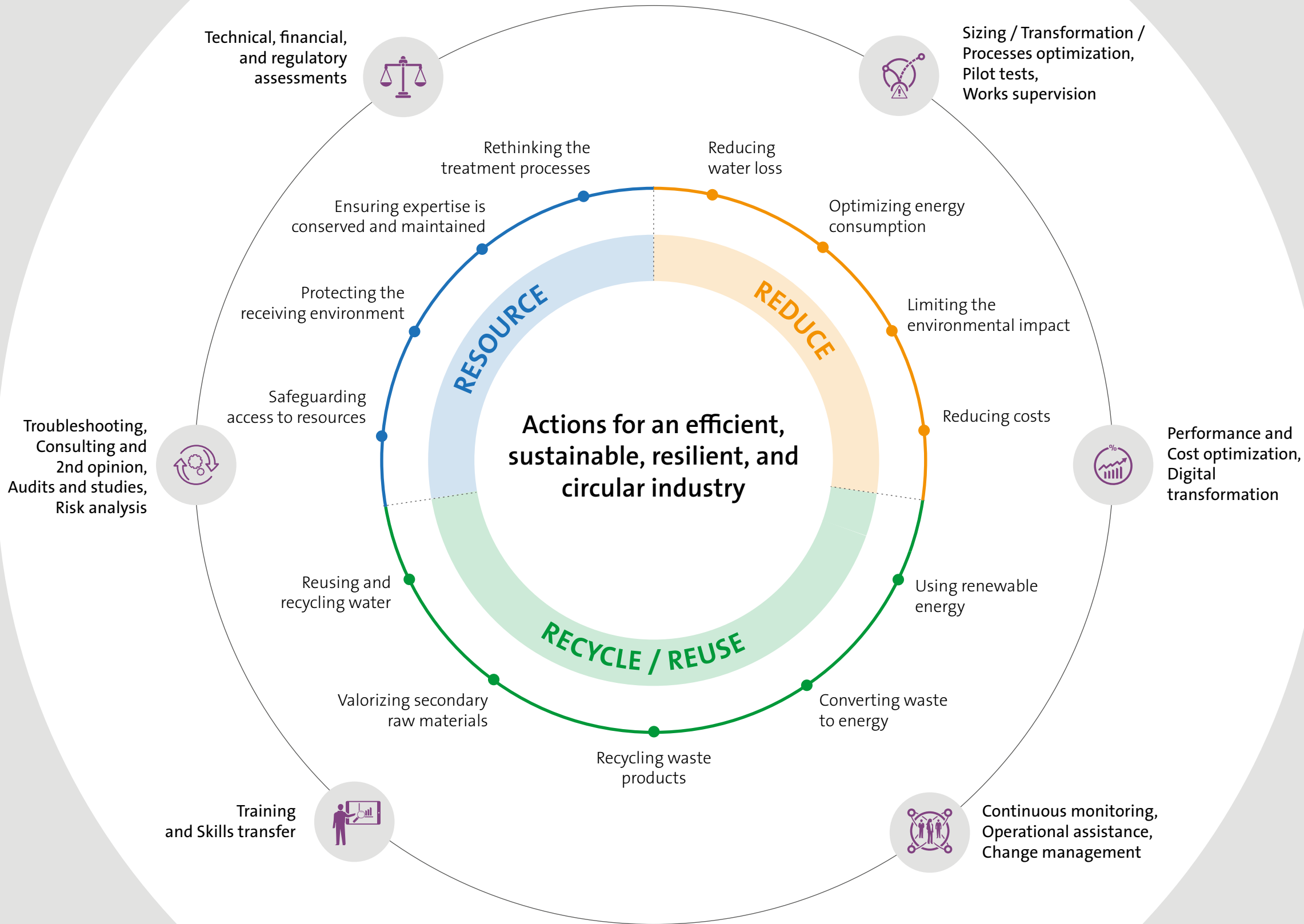
Seureca designs solutions adapted to today's challenges in all fields of the environment

- **water, energy, waste recovery and recycling** -
for both the public and private sectors.



To maintain its **competitiveness** and **efficiency**, the industrial sector must anticipate and meet the challenges of today and tomorrow in **operational, environmental, and economic issues**:

- Optimizing production processes, operational costs and investments;
- Managing operational constraints during growth phases;
- Improving environmental and sanitary performance;
- Reducing carbon and water footprints;
- Compliance with regulatory requirements.



RECENT ACHIEVEMENTS

FOOD AND BEVERAGE

- **Belgium:** Impact study on wastewater infrastructure and discharges from production growth.
- **France:** Technical support for PLA and PET yoghurt containers recycling model.
- **Indonesia:** Biomass assessment studies on multiple sites.

AUTOMOTIVE

- **France:** Feasibility study for upgrading the water cycle system at a plant.

CONSUMER GOODS

- **Italy, Ecuador, Spain and France:** Multi-site energy and decarbonization audits.



METALLURGY

- **India:** Resource assessment for the development of compressed biogas plants at multiple locations.

PETROCHEMICAL

- **Oman:** Feasibility study and Front-End Engineering Design (FEED) for a new wastewater treatment plant.
- **Saudi Arabia:** Strategy for plastic waste management.

PHARMACEUTICAL

- **United States:** Waste management audit and Zero Landfill design solution at a vaccine production site.



Find our references at :
seureca.veolia.com/references

Resourcing the world



Paper from sustainably
managed forests

contact@seureca.com

www.seureca.veolia.com | Follow us on **LinkedIn**